

IRMARFER PRODUCT CATALOGUE 2018|19





- DECIDE FOR THE - STATE OF THE ART - TENT STRUCTURES & SYSTEMS OF IRMARFER -
- FULFIL YOUR NEXT PROJECTS WITH A NEW AND SOPHISTICATED DESIGN -
- EQUIPPED WITH MORE POSSIBILITIES! -



**VM YOUR OFFICIAL IRMARFER PARTNER
- CENTRAL & EASTERN EUROPE -**

TENT STRUCTURES & SYSTEMS

- ° Dome tent
- ° Wave & Wave R tent
- ° VIP Club Solution
- ° Fair Dome
- ° Aircraft Hangar
- ° Lightweight building construction
- ° Gable tent | A-frame
- ° Pagoda
- ° Storey SystemS
- ° Sport Dome

FLOORING SYSTEM

- ° height adjustable

CUSTOM - MADE DESIGNS

HARD FACTS

- ° Individuality
- ° Safety (Wind loads up to 100 km/h)
- ° Technology & Know - How
- ° Design & Room height
- ° Incomparable structures
- ° Hanging loads up to 500 kg / point
- ° Modular Systems
- ° and much more

Quality Characteristics

- ° In-house aluminium productions line - Headquarter
- ° In-house tarpaulin production and assembly
- ° Long-time know-how in planning and design
- ° Large storage for all kind of tent types, sizes and flooring systems

INDEX

STRUCTURES & SYSTEMS

1. General information DOME STRUCTURES (igloo tent structure | SWISS DOME)
2. Interior DOME STRUCTURE (membranes, hanging loads, construction forms)
3. size chart of DOME structure
4. WAVE 55 _ R **NEW!**
5. WAVE STRUCTURE
6. STOREY SYSTEM
 - ° construction forms & possible combinations with the IRMARFER tent structures
7. VC SOLUTION SYSTEM
 - ° Design 1.0 & 2.0
8. the adjustable FLOORING SYSTEM of IRMARFER
9. the FAIR DOME
10. custom-made design / fair construction / NEW Gable Design **NEW!**
11. AIRCRAFT HANGAR **NEW!**
12. LIGHTWEIGHT BUILDING CONSTRUCTION **NEW!**
13. SPORT DOME Information's (C1 + C2 + C3)
14. SPORT DOME Design **NEW!**
- 15/16. References
- 17/18. References | Contact



hard facts of our air-conditioning & heating systems

- ° Conventional and individual plant production
- ° Heating technology from 25 - 700 KW heating power per unit
- Air conditioning technology from 15 - 70 KW cooling capacity per unit
- ° Our heaters convince with their high condensing efficiency and efficiency of 97%
- ° Heating cost savings through our state-of-the-art plant and combustion chamber technology
- ° Quick and easy installation for temporary use in the eventS, longterm rental or permanent installation
- ° Even warm air distribution in the tent | Hall | Buildings ...
- ° Optimal air distribution (permanent fresh air supply)
- ° Heat recovery through heat difference compensation
- ° The systems are user-friendly, service and low maintenance



The DOME STRUCTURE of IRMARFER | modern. sleek. modular.

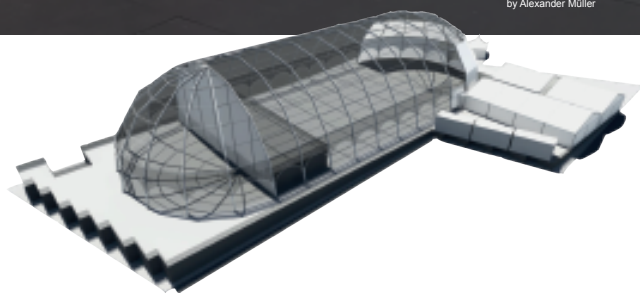
The IRMARFER Dome structures, also known as the Igloo tent (SWISS DOME) - are characteristic and stands out with its unique design and many design variants.

Thanks to the modular characteristics of our structure we are able to respond specifically to our customer requirements. Convince yourself - Contact us! Plan your next projects hand in hand with us and differentiate yourself from your market competitors.

Industries: Business & Gala Event | Sport Event | Fashion Show | Talk & Press | Product Presentation | Roadshows | Fairs | Festivals | Aircraft Hangar | Storage Hall and many more

STRUCTURE

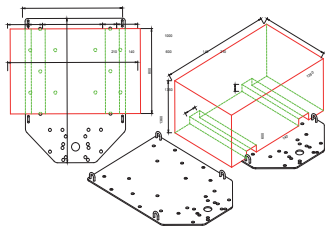
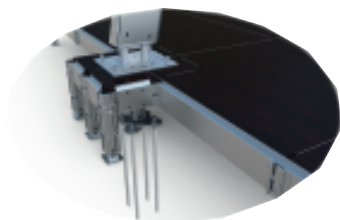
- ° The polygon structure can be extended alongside in a 5m grid
- ° Modular constructions system
- ° Dome - combinations of various sizes are possible (tent connections from Dome to Dome)
- ° State-of-the-art technology for temporary operations
- ° Patented double-zip mechanism for tight fitting roof membranes
- ° compatible with our adjustable flooring system
- ° NEW: use the Dome structure as a modular stage (stage sizes: 12,5, 15, 20, 25, 30, 40m | width)



Event: Vodafone Digital PaCon 2018
by Alexander Müller

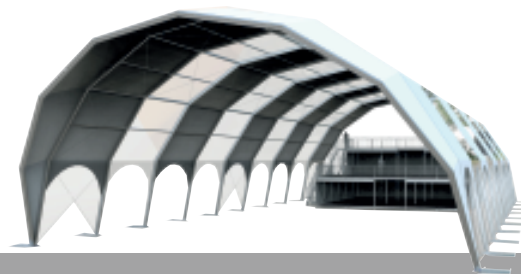
FIXATIONS | BALLAST

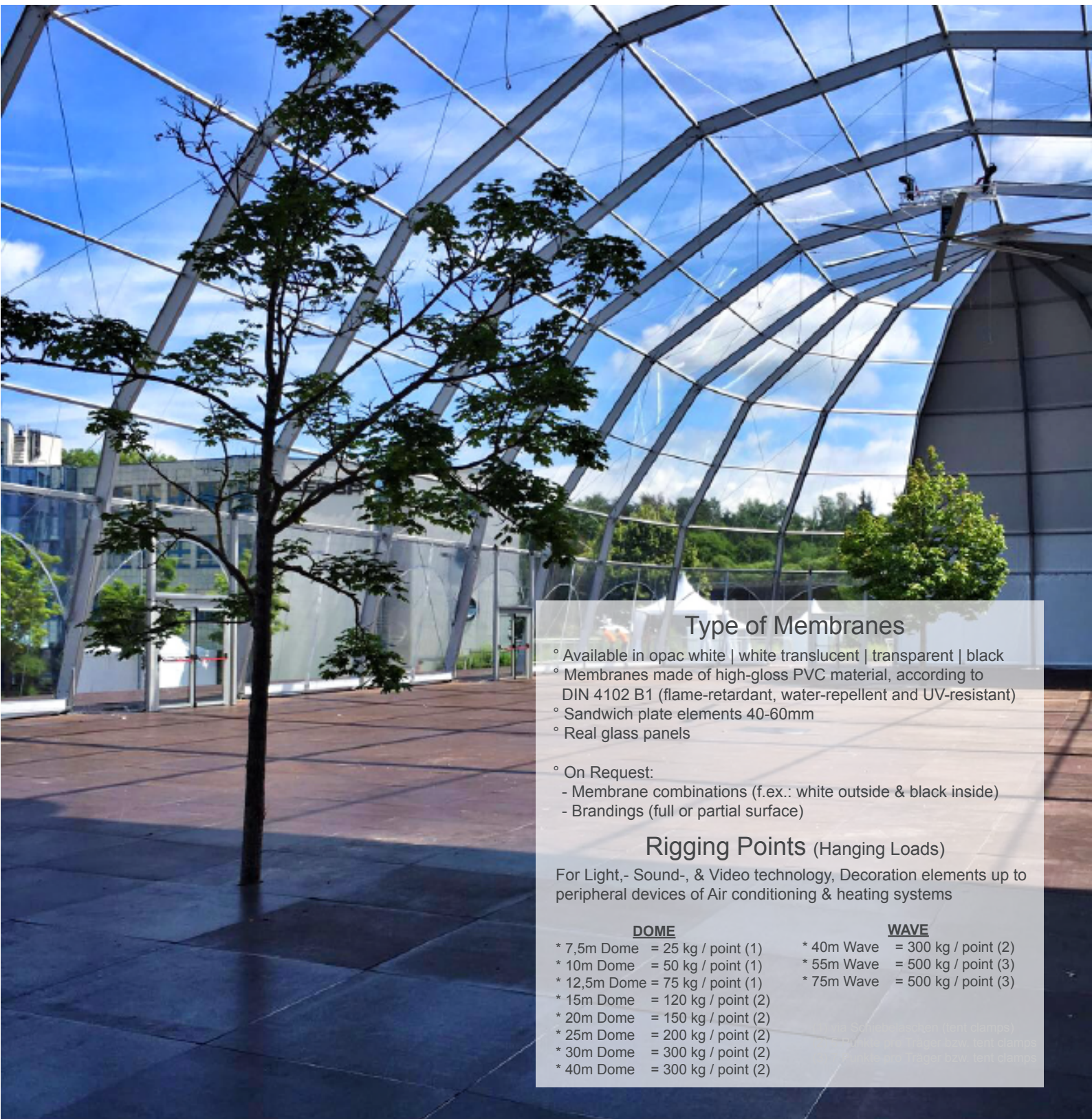
- ° Fixing the structures with ground spikes | screw anchor | concrete basements or water tanks



3D RENDERING

Allow our in-house design team to create some 3D Renderings to reflect your visions and ideas.





Type of Membranes

- ° Available in opac white | white translucent | transparent | black
- ° Membranes made of high-gloss PVC material, according to DIN 4102 B1 (flame-retardant, water-repellent and UV-resistant)
- ° Sandwich plate elements 40-60mm
- ° Real glass panels
- ° On Request:
 - Membrane combinations (f.ex.: white outside & black inside)
 - Brandings (full or partial surface)

Rigging Points (Hanging Loads)

For Light-, Sound-, & Video technology, Decoration elements up to peripheral devices of Air conditioning & heating systems

DOME

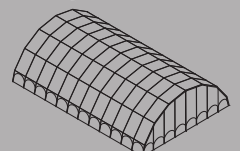
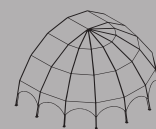
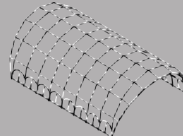
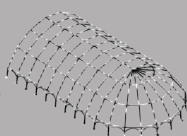
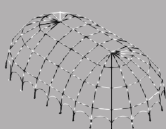
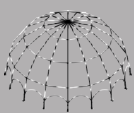
- * 7,5m Dome = 25 kg / point (1)
- * 10m Dome = 50 kg / point (1)
- * 12,5m Dome = 75 kg / point (1)
- * 15m Dome = 120 kg / point (2)
- * 20m Dome = 150 kg / point (2)
- * 25m Dome = 200 kg / point (2)
- * 30m Dome = 300 kg / point (2)
- * 40m Dome = 300 kg / point (2)

WAVE

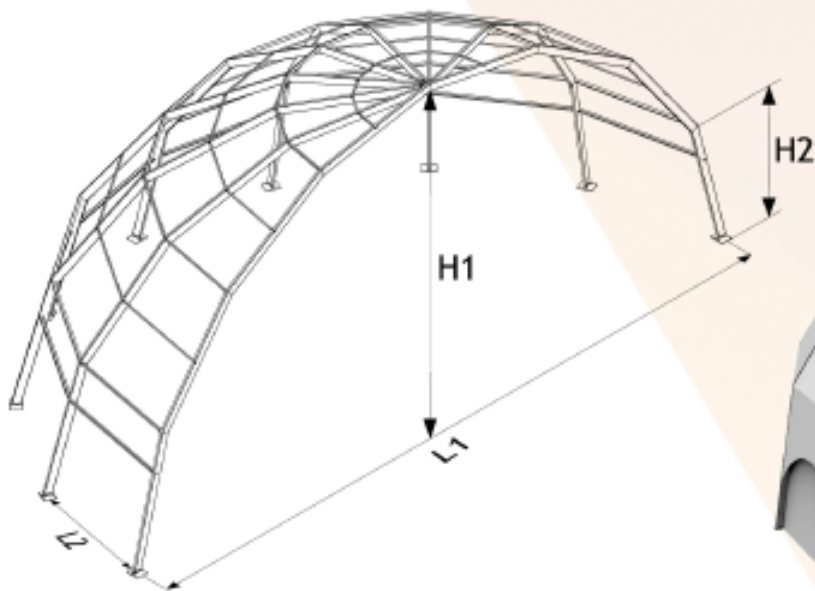
- * 40m Wave = 300 kg / point (2)
- * 55m Wave = 500 kg / point (3)
- * 75m Wave = 500 kg / point (3)

* 30m Dome (2 points) (tent clamps)
 * 40m Dome (2 points) (tent clamps)
 * 55m Dome (3 points) (tent clamps)

CONSTRUCTION FORMS



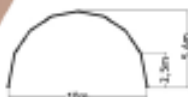
DOME STRUCTURE



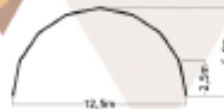
7,5m



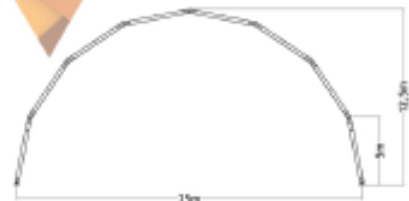
10m



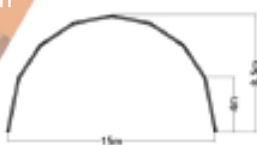
12,5m



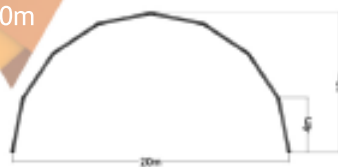
25m



15m



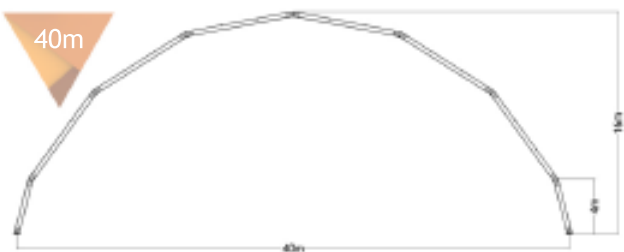
20m



30m



40m



Specifications	Measure	Iglo 7,5m	Iglo 10m	Iglo 12,5m	Iglo 15m	Iglo 20m	Iglo 25m	Iglo 30m	Iglo 40m
Diameter	L1	7500mm	10000mm	12500mm	15000mm	20000mm	25000mm	30000mm	40000mm
Distance Between Feet	L2	3745mm	3855mm	4775mm	4630mm	5170mm	5555mm	5655mm	6250mm
External Ridge Height	H1	4650mm	5620mm	6440mm	8560mm	10230mm	12780mm	14400mm	16200mm
Feet Height	H2	2400mm	2500mm	2500mm	4000mm	4000mm	5000mm	5650mm	4000mm



WAVE STRUCTURE_R

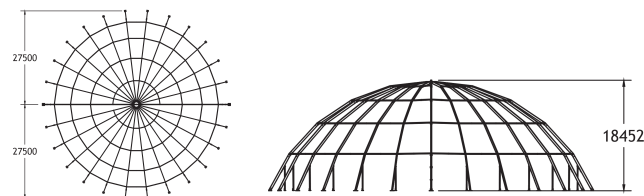


The WAVE STRUCTURE 55_R of IRMARFER | high performance. room height.

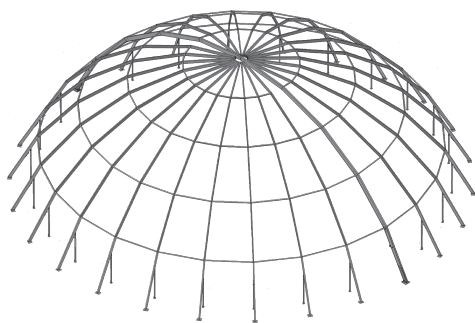
The WAVE structure R is unique in art & design and offers impressive technical specifications in terms of the room height and suspension point loads at the roof. The Wave Structure 55 R was designed for the requirement of high spans with an round design and will be used for Events like trade fairs, festivals, major events, business & corporate and sporting events..

STRUCTURE

- ° Polygon structure
- ° Ridge height WAVE 55 = 18m
- ° State-of-the-art technology & design
- ° Optical attractive constructions form
- ° Compatible with our adjustable flooring system



DIMENSIONAL SKETCH WAVE 55 R



LOAD CAPACITY

- Maximum load of suspension points: (for Riggings)
- ° WAVE 55 R: 300 - 500 kg / point

TYPE OF MEMBRANE

- ° Standard: opac white
- ° On Request: white translucent | transparent | black | Membrane combination (white outside - black inside)
- ° Sandwich plate elements 40-60mm
- ° Real glass panels
- ° Membrane made of high-gloss PCS material, according to DIN 4102 B1 (flame retardant, water-repellent and UV-resistant)

NEW WAVE DESIGN.

NEW POSSIBILITIES.

NEW PERFORMANCES.

NEW EVENTCONCEPT.



WAVE STRUCTURE



The WAVE STRUCTURE of IRMARFER | till 70m span. impressive. next level.

The Wave structure is unique in technology and design and stands out with impressive technical data in terms of ceiling height and suspension points at the roof. The Wave structure has been designed to meet the requirements of 40 - 75m span widths and will be used mostly in following areas: Trade fairs, Festivals, Major Events, Sport facilities up to the Constructions Industry.

INDUSTRIES

- ° Major Events
- ° Music Festivals
- ° (temporary) Exhibitions
- ° Construction Industry
- ° longterm Sport Events
- ° Cover of Sport Facilities (Football | Soccer | Training courts,...)

STRUCTURE

- ° the polygon structure can be extended alongside in a 5m grid
- ° ridge height: WAVE 45 = 15,8m | WAVE 55 = 18m | WAVE 75 = 22m
- ° state-of-the-art technology & design
- ° optical attractive constructions form
- ° compatible with our adjustable flooring system

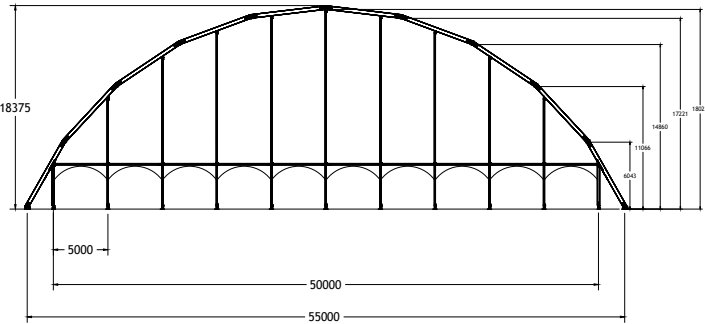
LOAD CAPACITY

- Maximum load of suspension points: (for Riggings)
- ° WAVE 45m span: 300 kg / point- per arch approx. 1.500 kg
 - ° WAVE 55m span: 500 kg / point- per arch approx. 3.500 kg
 - ° WAVE 75m span: 500 kg / point- per arch approx. 3.500 kg

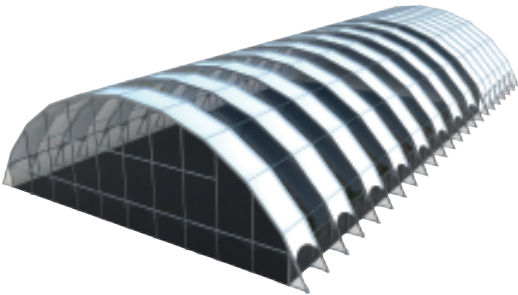
TYPE OF MEMBRANE

- ° Standard: opac white
- ° on Request: white translucent | transparent | black | Membrane combination (white outside - black inside)
- ° sandwichplate elements 40-60mm
- ° real glass panels
- ° membrane made of high-gloss PCS material, according to DIN 4102 B1 (flame retardant, water-repellent and UV-resistant)

DIMENSIONAL SKETCH WAVE 55



RENDERING WAVE 55



STOREY SYSTEM



THE STOREY - SYSTEM OF IRMARFER | several levels. modular.

Our STOREY SYSTEM with its modularity, provides a variety of constructions options. Depending on the usage and the requirement profile regarding the necessary traffic load and spacing, we are able to offer three systems:

System 1: grid 2,5 x 2,5m | System 2: grid 5 x 5m | System 3: grid 7,5 x 7,5m

We offer our clients the possibility to create with these systems upper floors, terraces, premises with an individual design. Our clients are able to customize their own and individual VIP area by combining the storey system with our Dome, Wave or Gable structures.

INDUSTRIES

- ° Business Events
- ° VIP Areas for Major Events
- ° VIP Areas for Music Festivals
- ° VIP Areas for Sport Events
- ° Exhibitions
- ° and more

STRUCTURE

- ° Available in 2,5 - 5 - 7,5m grid dimension (poles)
- ° Choose between 2 - 4m side height
- ° State-of-the-art technology & design
- ° Expandable till three levels
- ° Compatible with all IRMARFER tent structures
- ° Tent structures available in different sizes (page 3)
- ° modular

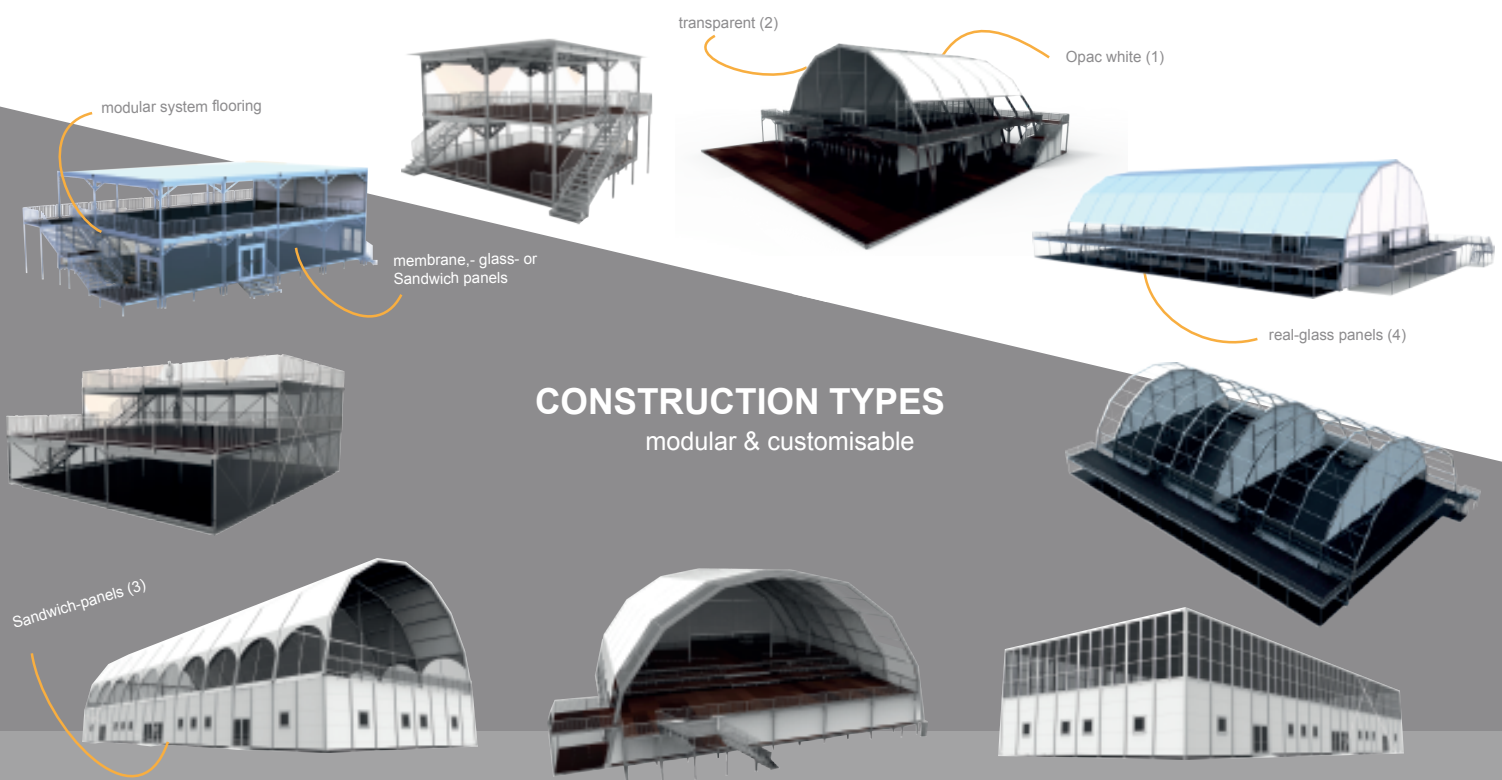
LOAD CAPACITY

max. traffic load:

- ° Two Storey: Ground floor 500 kg / m² - 1st floor 500 kg / m² (2)
- ° Three Storey: Ground floor 330 kg / m² - 1st 330 kg / m² - 2nd 330 kg / m² (3)

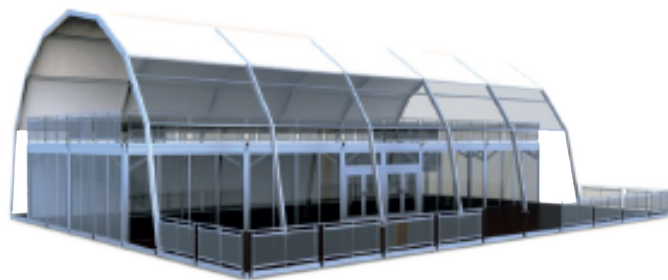
TYPE OF MEMBRANE

- ° **Standard membrane** for the roof and sides part: opac white | translucent white | membrane combinations (white & black) or alternatively with transparent membranes - made of high-gloss PVC material, according to DIN 4102 B1 (flame-retardant, water-repellent and UV-resistant)
- ° on request, insulated **sandwich panels 40 - 60 mm** or **real-glass panels**
- ° Branding (full or partial surface)



CONSTRUCTION TYPES

modular & customisable



The VC SOLUTION - SYSTEM of IRMARFER | design. modular. two level.

The VIP CLUB Solution system is a combination of our DOME / | WAVE structure and our height adjustable flooring system. This Design is currently available in 2 variants. With these designs you are able to expand your VIP areas of your future events in a sophisticated way. This unique design ensures a corresponding recognition mark on your event site. The side parts of the structures can be kept open and / or closed depending on the event concept.

INDUSTRIES

- ° VIP Bereich bei Sport Veranstaltungen
- ° VIP Bereich bei Großveranstaltungen
- ° VIP Bereich auf Musik Festivals & Konzerten
- ° VIP Bereiche wo Individualität & Design gefragt ist

STRUCTURE

- ° Dome | Wave Sizes: 15 | 20 | 25 | 30 | 40 | 55m
Inner dimension of the structure 1.0: 15 | 20 | 25 | 30 | 40 | 50m
Inner dimension of the structure 2.0: 15 | 20 | 25 | 35 | 45m
- ° Storey system with 2,5 - 5m - 7,5m grid dimension (poles)
- ° choose between: 2 - 4m side height
- ° State-of-the-art technology & design
- ° available with the DOME or WAVE (on request Gable tent)
- ° Balustrade available as VIP glass or steel

LOAD CAPACITY

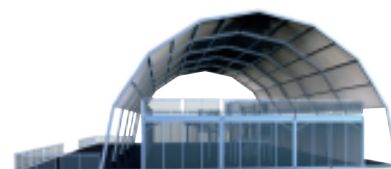
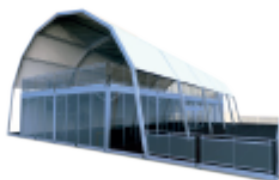
max. Traffic Load:

- ° Ground Floor 500 kg / m² - 1st Floor 500 kg / m²
- expandable if needed through the reduction of grid dimension
- ° Use the significant advantages of our system

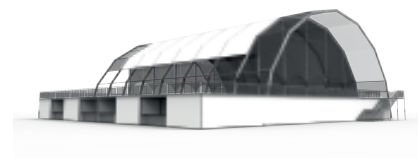
TYPE OF MEMBRANE

- ° **Standard membrane** for the roof and sides part: opaque white | translucent white | membrane combinations (white & black) or alternatively with transparent membranes - made of high-gloss PVC material, according to DIN 4102 B1 (flame-retardant, water-repellent and UV-resistant)
- ° on request, insulated **sandwich panels 40 - 60 mm or real glass panels**
- ° Branding (full or partial surface)

DESIGN 1.0



DESIGN 2.0



NEW DESIGN. HIGHLY PROMISING SUPPLY OF SPACE . MODULAR. INDIVIDUAL.

Use addition to the upper floor also the ground floor for Bar's, back offices, sanitary, storage and more. The stairs can be placed according to requirements - exterior as well as interior.

ARE YOU READY FOR THE NEXT LEVEL?



FLOORING SYSTEM



The FLOORING SYSTEM of IRMARFER | height adjustable. quick. modular.

Our height-adjustable flooring system is versatile and offers you the necessary flexibility for the planning processes of your projects. With a low transport weight due to the aluminium construction in a 2,5 x 2,5 grid and base plates made of screen printing material or optionally with real glass plates in a grid of 1,25 x 1,25m, short set up and dismantling times can be performed. Intensive and complicated underlay for bridging floor level differences belongs to the past while using our adjustable flooring system. Add extra highlights to your event space by incorporating the existing environment on site (trees, lanterns, etc.)

STRUCTURE

- ° Height-adjustable from 0,2 till 4m
- ° Wood & glass plates 1,25 by 1,25m
- ° Aluminium frame 2,5 by 2,5m
- ° Balustrade available in VIP glass or steel design
- ° Compatible with all IRMARFER structures

Further accomplishments with our flooring system

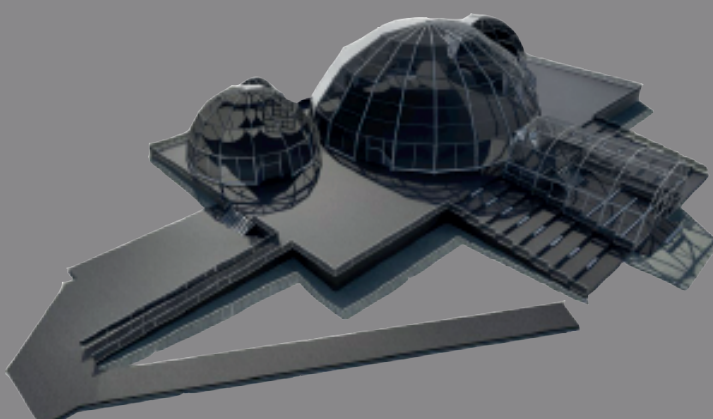
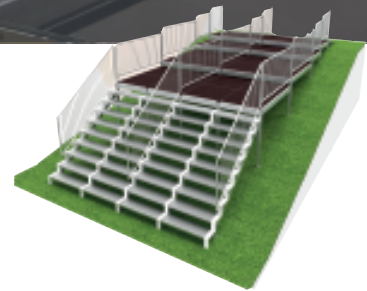
- ° Tribunes & stages
- ° Runways
- ° Balcony | Mezzanine | Platforms
- ° Stairs
- ° Scaffold constructions for events (up to 5 floors)

LOAD CAPACITY

- max. Traglast: (Verkehrslast)
- ° 500 kg / m²
- ° bei Bedarf auch erweiterbar

SET UP TIME

- ° We lay approx. 1.000 sqm flooring per day (up to 0,4m level difference)



**SAY HELLO TO
QUICKNESS
&
INDIVIDUALITY!**

FAIR DOME

The FAIR DOME of IRMARFER | modular. full service.

Decide yourself at your next Trade Fair | Trade Show | Fair After Show Event for our Dome or Wave structures and benefit in the meantime from our latest service - the fair construction.

Although a system stand or an individual exhibition stand construction will be needed.

Thanks to creative & competent technical staff we are able to cover this area for our clients as well.

With our Dome & Wave structure, we not only provide a visual highlight, we offer you & your exhibitors the possibility of making their future trade fair appearances more individual and bigger.

STRUCTURE

- ° Use our Dome-, Wave-, Gable tent & Storey system
- ° The polygon-structure can be extended alongside in a 5m grid
- ° Modular systems
- ° Type of Membrane: opac white | white translucent | transparent
- ° Optional side panels:
 - Sandwich plate 40-60mm
 - Real glass panels
- ° Room height Dome structure: 4,6 - 16m
- ° Room height Wave structure: 15,8 - 22m

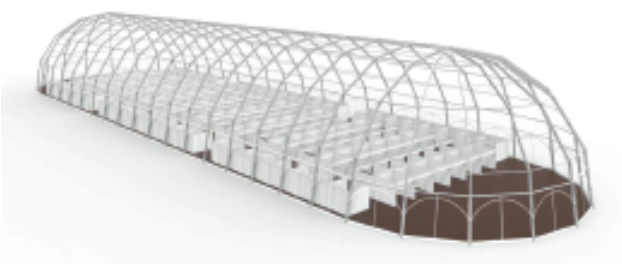
HANGING LOAD

max. hanging loads of our Dome & Wave structures:

- ° 70 - 500 kg /point (depending on size and structure)
- ° For Light-, Sound-, Video equipment & decoration

FLOORING SYSTEM

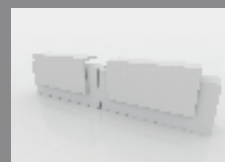
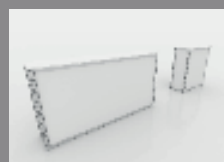
- ° Hight adjustable flooring system 0,2 - 4m
- ° Flooring is compatible with all IRMARFER structures
- ° We level the whole event area, if needed
- ° max. traffic load: > till 500 kg / point (expandable if needed)
- ° Use the given room height of our structures and create with our storey system additional exhibition space on a second floor.



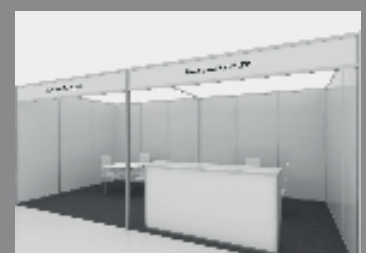
EXHIBITIONS STANDS

Decide for IRMARFER SWISS and enjoy our EXHIBITION DOME equipped with:

- ° System stands incl. furniture & counters, ...
- ° Individual stand construction
- ° Mobile climate & heating technology



System Stand 3 x 3m



System Stand 6 x 3m

CUSTOM-MADE DESIGN



SPECIAL CONSTRUCTION. CUSTOMIZED SOLUTIONS. FAIR CONSTRUCTION.

Due to our -state of the art- production lines at the plant (HQ), we are in a position to offer our customers need based spacial structures.
The required tent structures & systems are customized and manufactured totally in-house.
That happens in a close cooperation with the subsidiaries S2E (fair construction) & IMAG INDUSTRIAL (digital printing)

STRUCTURE

- ° individual tent structures
- ° system flooring
 - Ground fl. 500 kg / m2 | 1st fl. 350 kg / m2 | 2nd fl. 350 kg / m2)
- ° grid 2,5 x 2,5m | 5 x 5m | 7,5 x 7,5m
- ° height adjustable poles 2 bis 3,5m
- ° modular system flooring
- ° if required, special elements can be produced in-house

TYPE OF MEMBRANE

- ° Membrane: Opac white | Weiß translucent| transparent | colours
- ° sandwich panels 40-60mm or real-glass panels

SOLUTION FOR INDIVIDUAL REQUIREMENTS

- ° Custom-made Exhibition tools, Event tools, Festival tools
- ° modular storey system with individual cover elements & Branding

ALTERNATIVE SCOPE OF APPLICATIONS

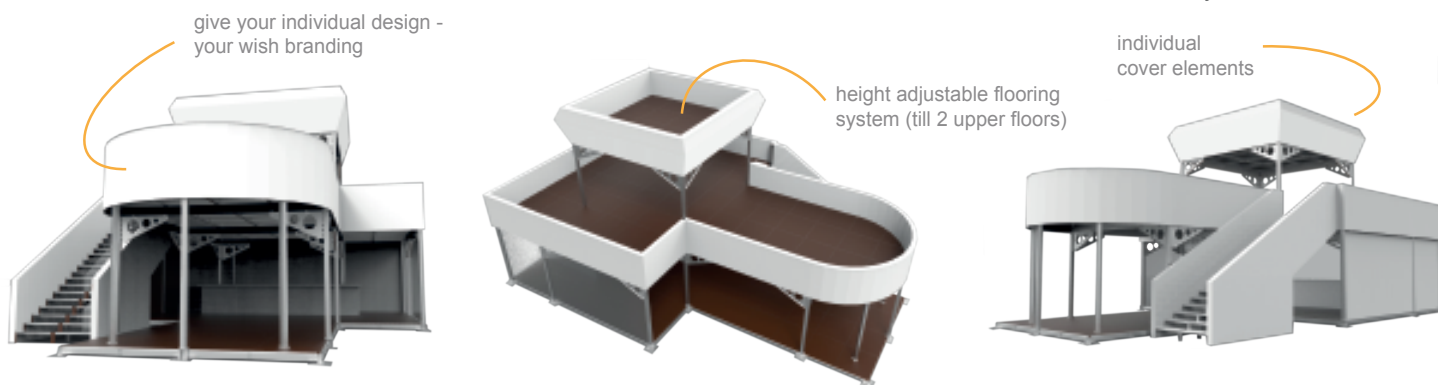
- ° Dry-dock Cover System for Ships
- ° Concert stages (12,5, 15, 20, 25, 30, 40, 55, 75m diameter) - look references!
- ° Cover System for theaters, Open air Cinemas - look references!
- ° Cover System for the construction industry

FAIR CONSTRUCTION

- ° subsidiary S2E

DIGITAL PRINTING & MORE

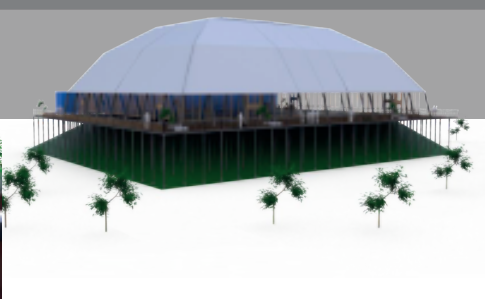
- ° subsidiary IMAG INDUSTRIAL



COMBINATION: GABLE + DOME DESIGN 40x40m | self-supporting

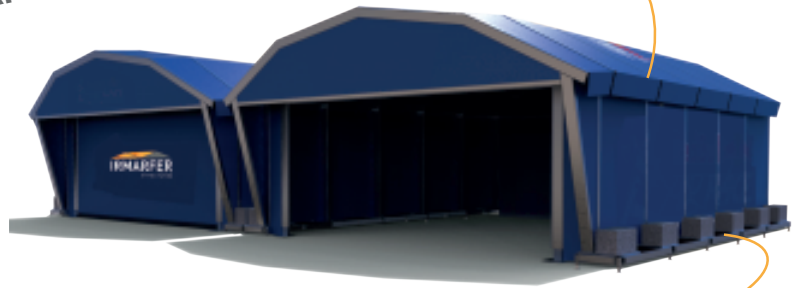


www.irmarfer.eu



TEMPORARY HANGAR SOLUTIONS FOR PRIVATJETS AND SPORT AIRCRAFTS

mobile Hangar
Solution



Leveling:

- ° height adjustable flooring system for temporary use
- ° in combination with steelplates and concrete elements

HANGAR SOLUTION

modular. expandable. customizable. temporary.

Due to our state of the art production plant we are able to offer our costumers requirement-related hangar solutions.

Our modern tent structures and systems can be adapted on local conditions.

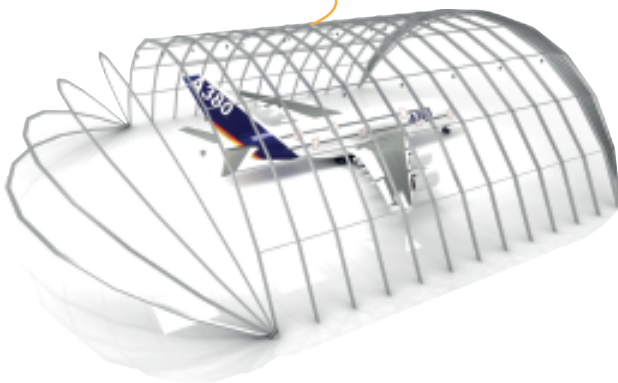
The structures can be ordered as single hangar or in combination.

The smaller hangars find their strengths also in the event sector: air shows, mobile pit lanes and more.

STRUCTURE

- ° Standard imensions: 12,5, 15, 20, 25, 30, 40, 50, 70m diameter
- ° if necessary, the existing sizes can be adapted to the local conditions
- ° equipment: roller shutter, doors, windows
- ° wind loads: up to 100 km/h (expandable if necessary)
- ° suspension points: 100 up to 500 kg / point (depending on size)
- ° range of application:
 - ° Cargo Warehouses
 - ° Aircraft hangar for airliner, sports aircraft, privatjets, cargo aircraft
 - ° workshop for aircrafts all types and sizes
 - ° Exhibition hangar

75m WAVE



TYPE OF MEMBRANE

- ° Standard: Opac white & translucent
- ° on request: colours & Membrane-Branding
- ° Sandwich panels 40-60mm
- ° membrane made of high-gloss PCS material, according to DIN 4102 B1 (flame retardant, water-repellent and UV-resistant)

IRMARFER



LIGHTWEIGHT BUILDING CONSTRUCTION



temporary. individual. modular. expandable.

IRMARFER uses only high- quality materials according to the standard for the temporary lightweight halls. Due to the - state of the art - production lines in-house, we are able to offer individual construction halls suitable for the respective projects. Although temporary production facilities, warehouses, sales halls and exhibition halls. Thanks to the modular design, the lightweight construction halls can be flexibly adapted to the operational an local conditions and subsequently extended on the long side.

STRUCTURE

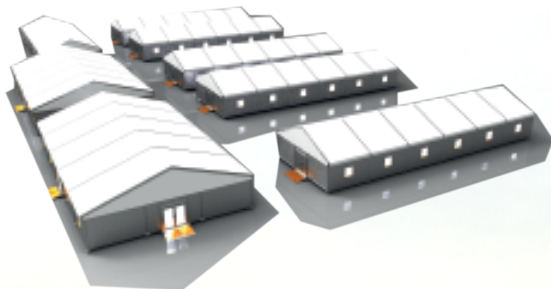
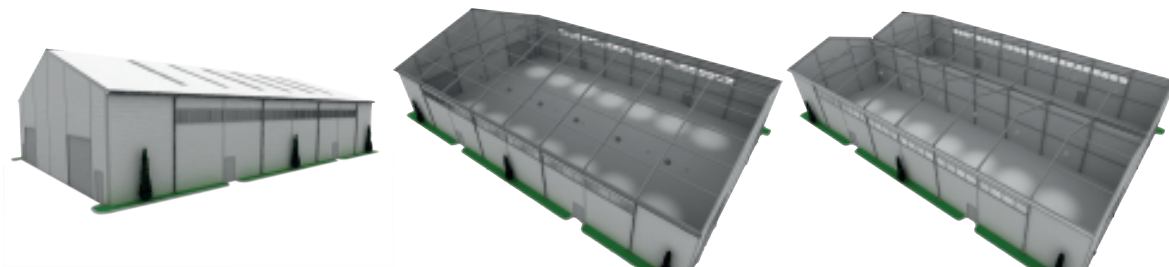
- ° standard measures: 5, 10, 12,5, 15, 20, 25, 30m diameter
- ° depending on the requirements, the lightweight construction halls can be adapted to local conditions
- ° equipment: roller shutter, doors, window, skylight, and more
- ° wind load: up to wind zone 2 (GER) 25 m/s
- ° snow load: 20 kg/m2
- ° hanging loads: 50 till 150 kg / point (depending on size)

AIR-CONDITIONING & HEATING

For every lightweight hall - we offer you an energy efficient and yet powerful climate & heating technology.

TYPE OF MEMBRANE

- ° standard: Opac white & translucent
- ° on request: colours & Membrane-Branding
- ° Sandwich panels 40-60mm
- ° membrane made of high-gloss PCS material, according to DIN 4102 B1 (flame retardant, water-repellent and UV-resistant)



SPORT DOME C1 - 3

The SPORT DOME of IRMARFER | modular. year-round.

Decide for our latest generation of sport facilities cover system - our IRMARFER SPORT DOME (tennis, football, basketball, universal, ...) thus ensure a year-round operation of your sports fields. This is made possible by the summer operation completely removable side and front side elements which creates an outdoor feeling and protects the game operation against bad weather.

The IRMARFER SPORT DOME can be designed for single or multiple playing surfaces.

Possible spans (B x L) 18 - 40m | 36 - 200m | 30 x 50m | individually buildable.

STRUCTURE

- ° C1: available in 18 x 36m with
 - * eaves height of 4m
 - * ridge height of 9,7m
- ° C2: available in 36 x 36m with
 - * eaves height of 4m
 - * ridge height of 12,6m
- ° C3: erhältlich in 30 x 50m fl. mit einer
 - * eaves height of 3,1m
 - * ridge height of 12,8m
- ° If necessary, the size of the structure can be adapted to the local conditions
- ° Water discharge with downpipes

SUSPENSION POINTS

max. hanging loads:

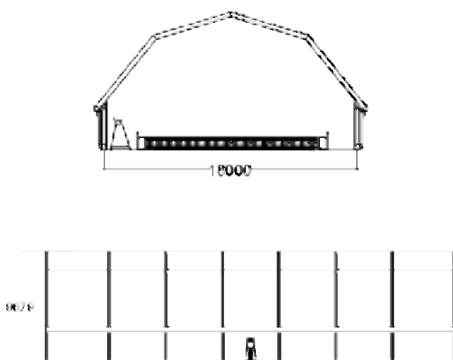
- ° 18 x 36m approx. 150 kg / point
- ° 36 x 36m approx. 250 kg / point

TYPE OF MEMBRANE

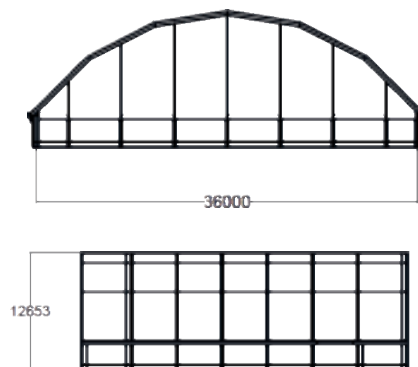
- ° Double roof membrane
- ° Type of Membrane: opac white | transparent
- ° The side panels (side | end faces | upper end faces) can be isolated with sandwich panels 40-60mm.
- ° Membrane made of high-gloss PCS material, according to DIN 4102 B1 (flame retardant, water-repellent and UV-resistant)

DIMENSIONAL SKETCHES

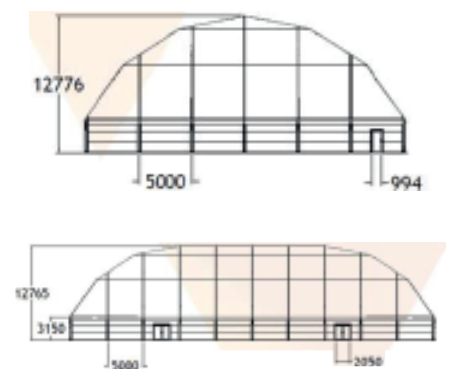
C1



C2



C3



FULL-YEAR OPERATION. SUMMER. WINTER. SAFETY. DESIGN.

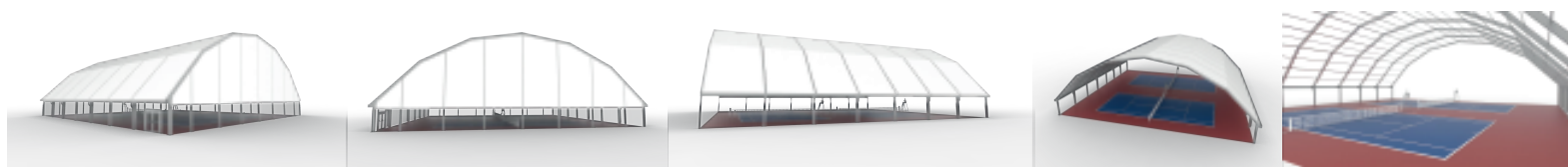
SPORT DOME C1 - 3

SPORT DOME DESIGNS

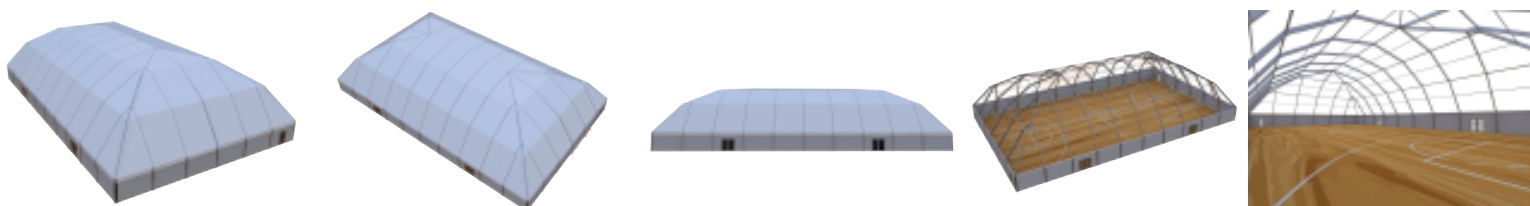
Solution C1 | 18 x 36m



Solution C2 | 36 x 36m and continuous



Solution C3 | 30 x 50m



AIR-CONDITIONING & HEATING

- ° Conventional and individual plant production
- ° Heating technology from 25 - 700 KW heating power per unit
- ° Air conditioning technology from 15 - 70 KW cooling capacity per unit
- ° Our heaters convince with their high condensing efficiency and efficiency of 97%
- ° Heating cost savings through our state-of-the-art plant and combustion chamber technology
- ° Quick and easy installation for temporary use in the eventS, longterm rental or permanent installation
- ° Even warm air distribution in the tent | Hall | Buildings ...
- ° Optimal air distribution (permanent fresh air supply)
- ° Heat recovery through heat difference compensation
- ° The systems are user-friendly, service and low maintenance



YEAR-ROUND OPERATAION. SUMMER. WINTER. SAFETY. DESIGN

DECIDE FOR OUR MOBILE AND CAREFREE AIR CONDITIONING & HEATING SYSTEM -

- YOUR PROJECT - OUR MISSION! -

MOBILE CLIMATE & HEATING TECHNOLOGY

- ° For all types of tent halls:
(Gable, Igloo & Dome tents | Tents with polygon roofs and more)
 - * Heating technology from 25 - 700 KW heating power per unit
 - * Air conditioning technology from 15 - 70 KW cooling capacity per unit
 - * incl. WDA-control for your ideal heat recovery and & fresh air supply
- ° for industrial and warehouse halls:
 - * temporary construction halls gable or polygonal construction
 - * existing industry and warehouses
 - * Heating technology from 150 - 700 KW heating power with WDA control for ideal heat recovery
- ° Mobile hot water central heating:
 - * 900 KW power on swap body container
- ° Industrial heating & cooling:
 - * for storage and industrial halls of every type | Retrofitting of a heat recovery technology
 - * for halls with high altitude and existing heating systems
- ° On Request, individual heating system construction

WE DELIVER EXPERIENCE - COMBINED WITH THE LATEST TECHNOLOGY!

HARD FACTS

- ° conventional and individual plant production
- ° Our heaters convince with their high condensing efficiency and efficiency of 97%
- ° Heating cost savings through our state-of-the-art plant and combustion chamber technology
- ° Quick and easy installation for temporary use in the eventS, longterm rental or permanent installations
- ° Even warm air distribution in the tent | Hall | Building ...
- ° Heat recovery through heat difference compensation
- ° The systems are user-friendly, service and low maintenance
- ° Save up to 40% heating costs compared to conventional systems
- ° Optimal air distribution (permanent fresh air supply)
- ° and much more ...

WECO - CONTAINER

NEW!

- ° mobile kitchen container
- ° WECO INTERIM KITCHEN
- ° refrigerated containers
- ° Container's on swap bodies
- ° Container's for ROADSHOWS

We produce modular containers in the dimension 3 by 6m (full-) stainless steel (inside) and if requested on swap bodies.

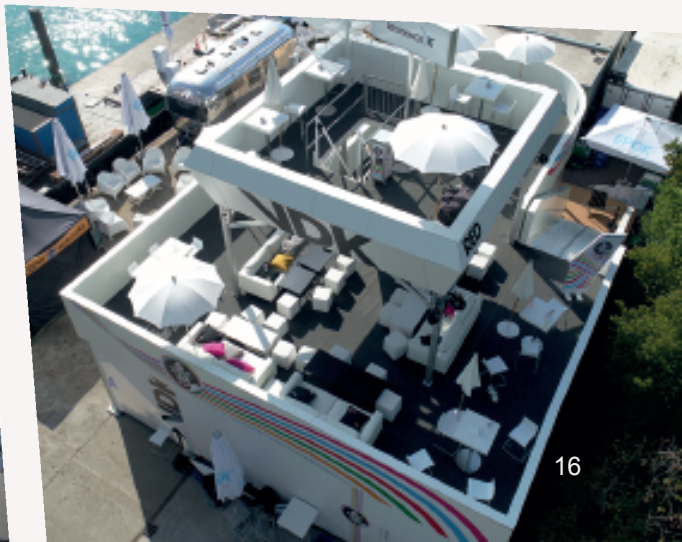
- ° Equipped, depending on the concept with
 - * kitchen appliances
 - * toilet facilities
 - * etc.

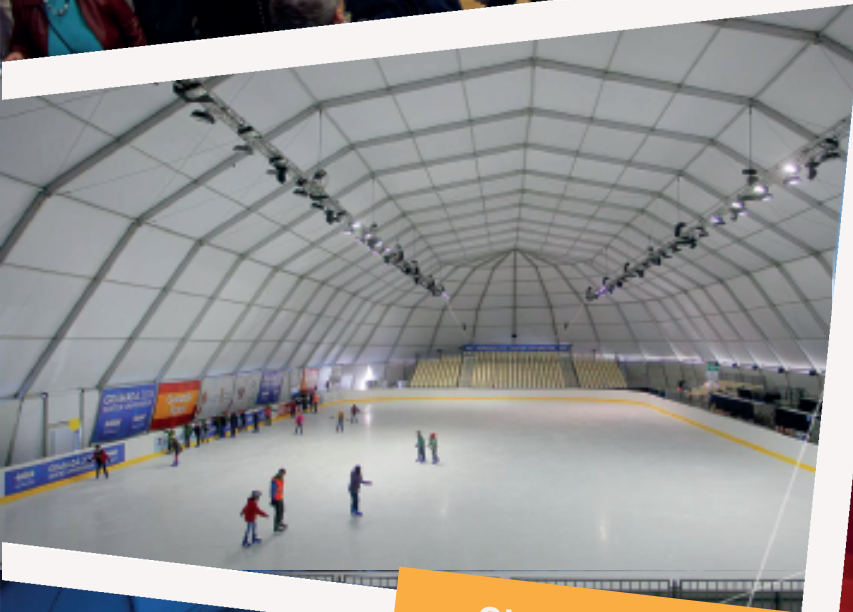


Did we spark your interest?
Get in touch with us!



CLIENTS WHO TRUST IN OUR ABILITY





CLIENTS WHO TRUST IN OUR ABILITY





CLIENTS WHO TRUST IN OUR ABILITY





CLIENTS WHO TRUST IN OUR ABILITY





CLIENTS WHO TRUST IN OUR ABILITY



GET IN TOUCH

IRMARFER CENTRAL & EASTERN EUROPE

Venue Management GmbH
Höpfling 3, 5165 Berndorf b. Salzburg

phone. AT / GER 0043 (0) 664 - 20 21 809
phone International 0043 (0) 664 / 44 90 275

mail. office@irmarfer.eu
www.irmarfer.eu



